

Training Module Section III

MapLab Configuration and Functions

1. Introduction

MapLab is a web-based Rapid Application Development (RAD) for easy prototyping and publishing of geo-spatial data. MapLab supports and simplifies every stage of developing spatially enabled web applications. It facilitates the discovery and integration of local and remote data sets, the cartographic representation of map layers and the management of maps and applications on local and remote web servers. MapLab is comprised of three independent but interconnected tools. These are: MapEdit, Map Browser and GMapFactory. The task of these tools are;

- **MapEdit:** Creating, mapping and editing “MapFiles”
- **MapBrowser:** Browsing and integrating map layers with WMS capability
- **GMapFactory:** Rapid creation and deployment of custom mapping application

The MapLab allows the user to create, edit and manage the “Mapfile” using the MapEdit application. Further, the GMapFactory application of MapLab allows the user to create the “Template” file which controls the appearance of the Web mapping application. The GMapFactory uses the “gmap” template and Rosa Java applet to display map layers defined in the Mapfile. MapBrowser application is a spatial data discovery tool that is compliant with the OGC Web Mapping specification. Using MapBrowser, application developers can browse and integrate map layers from local or WMS compliant remote servers.

2. Objective

The objectives of this training module are:

- 2.1. To check configuration of installed MapLab
- 2.2 To get familiar with the various components of MapLab.

3. Procedure

Once Minnesota Mapserver from the training CD is installed, MapLab will reside in the directory: c:\\foxserv\\www\\html\\maplab-2.0-release\\

- 3.1 Start application MapLab by typing following URL in the browser
<http://localhost/maplab-2.0-release/htdocs/>

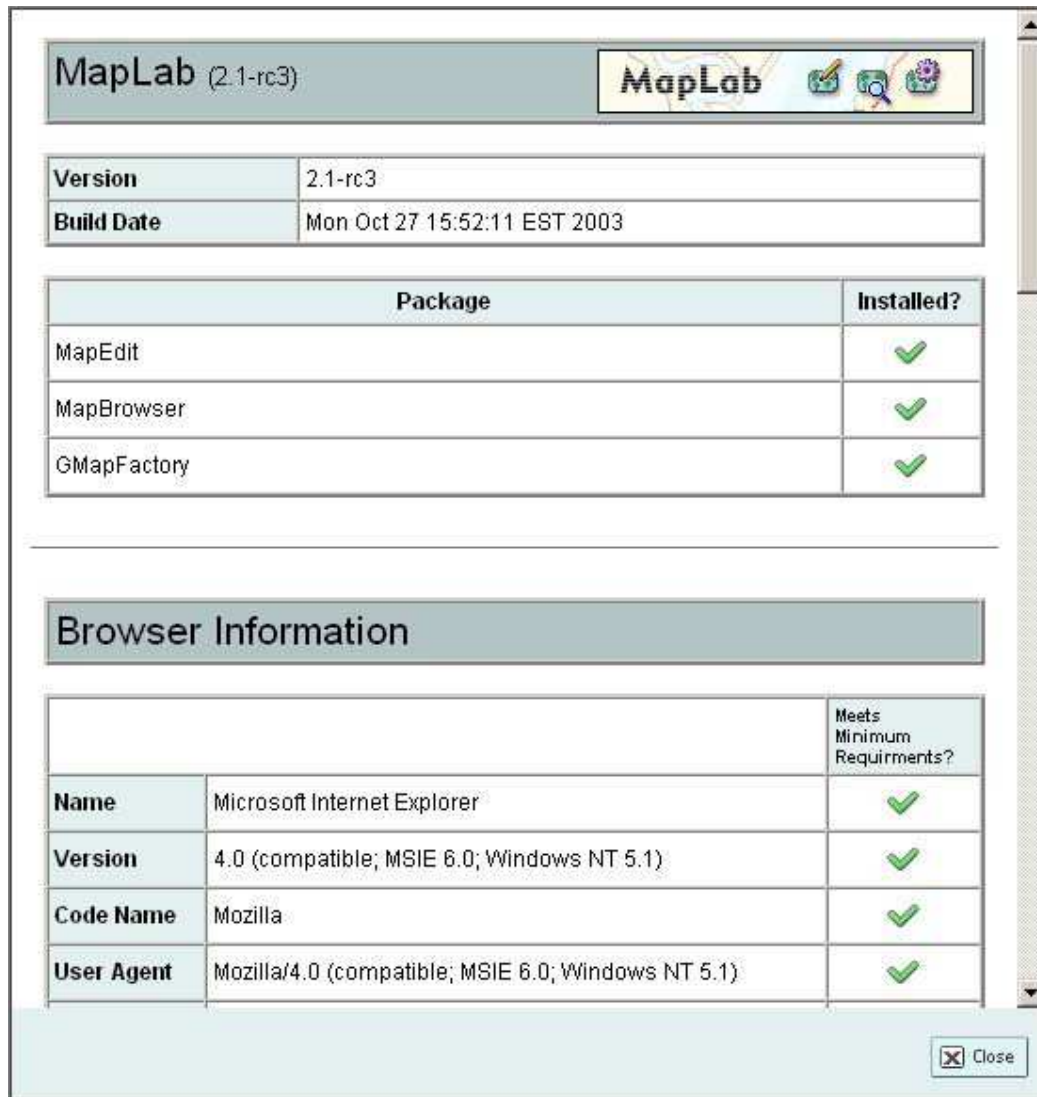
3.2 Firstly check the configuration of MapLab by clicking at icon information



in task bar of MapLab.



3.3 Browse through the MapLab Information dialog.



3.4 Check the current configuration of MapLab. By clicking

Note: All paths MUST contain forward slashes (/) only. Backslashes (\) are NOT supported!

app_path:
C:/FoxServ/www/maplab-2.0-release/
Absolute path to MapLab installation directory.

file_browser_root:
C:/FoxServ/www/
Absolute path to the root directory for the file browser dialog. This will be the highest directory a user can browse to in the file browser dialog.

allow_browsing:
true
Allow browsing on the server : true is yes and false is no.

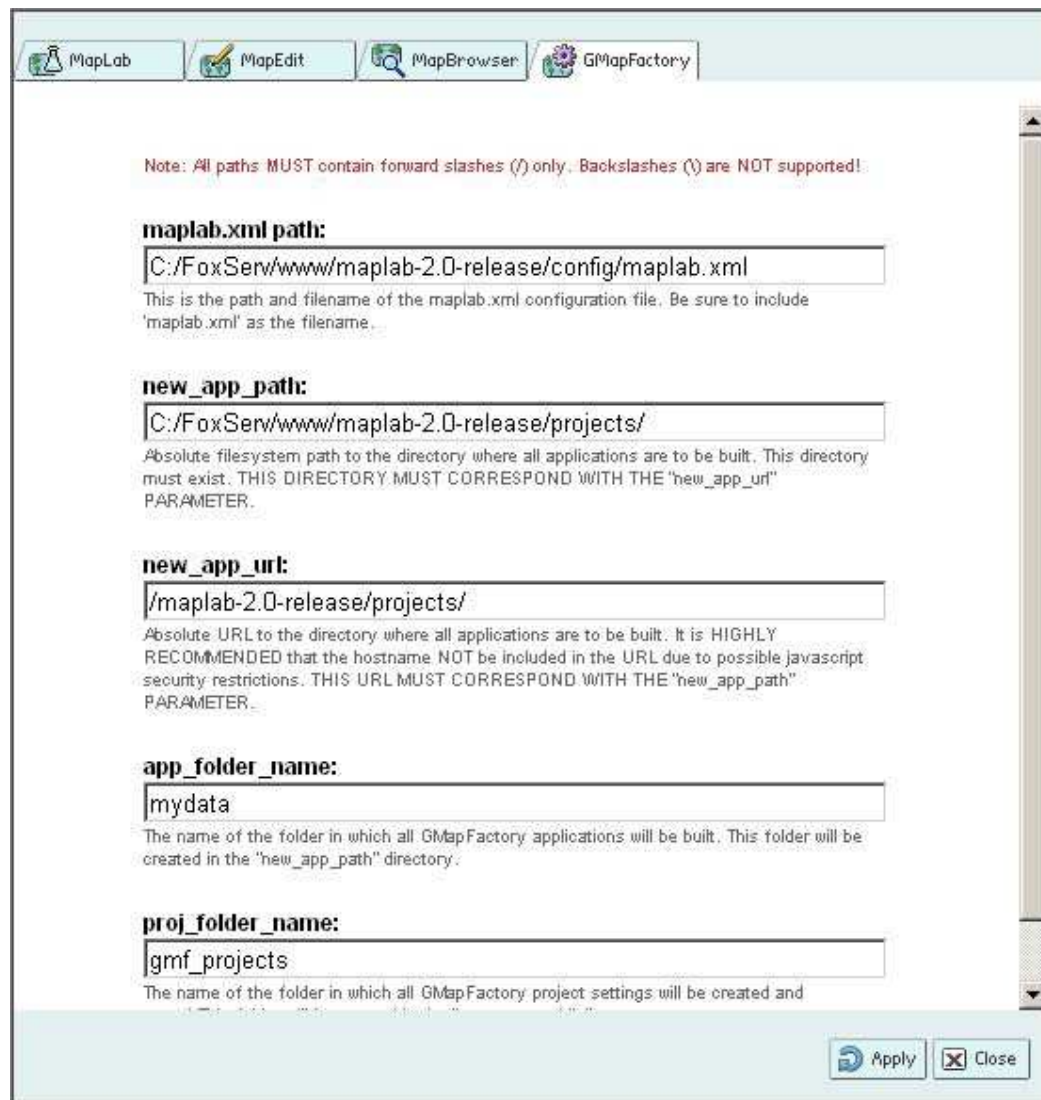
convert_old_files:
no
Convert old mapfiles to 4.0 format : true is yes and false is no.

group_name:
users
UNIX ONLY: Group name used when creating a new file or project. Used for permission access. The Web Server user must be a member of this group in order for this to work.

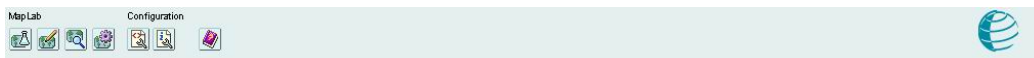
new_file_permission:
0664

Apply Close

3.5 Check GMapFactory by clicking  GMapFactory

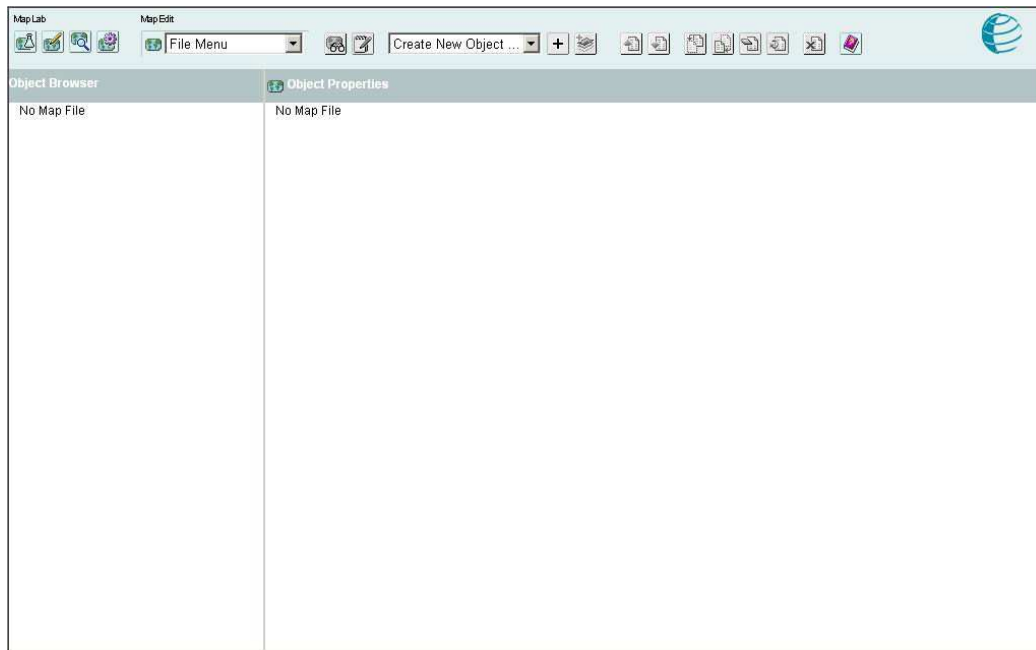


3.6 Explore function on the taskbar.

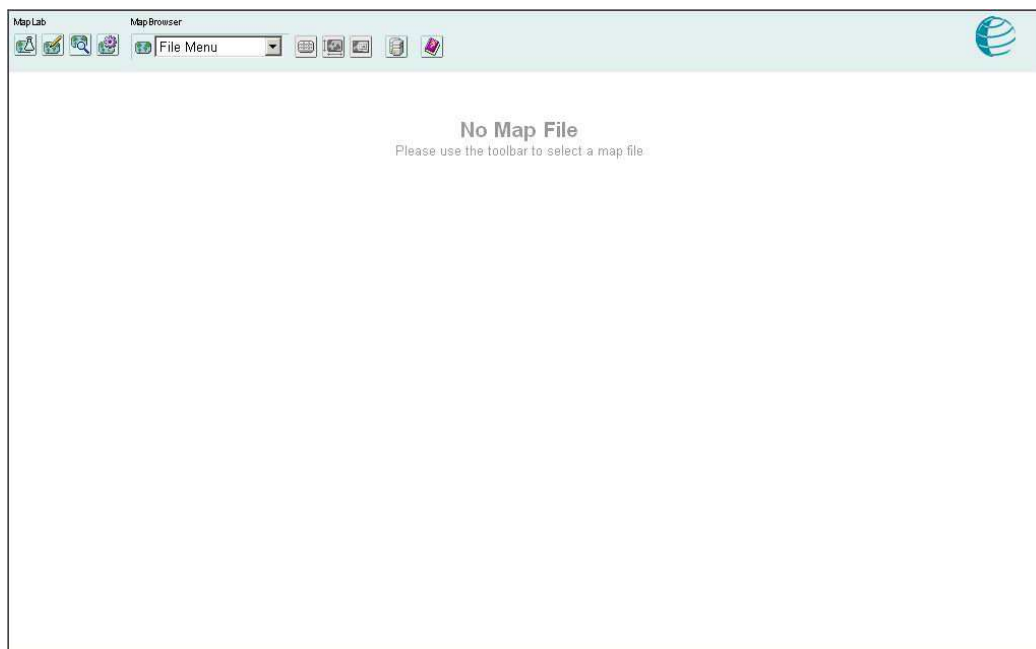



3.7 Enter MapEdit and explore its functions. By clicking

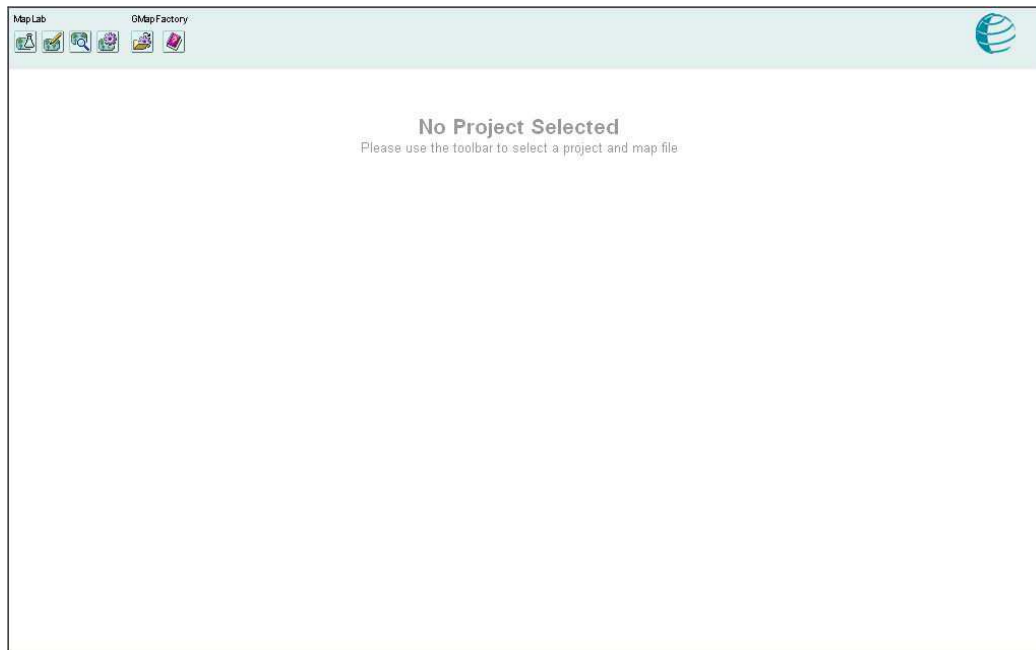




3.8 Enter MapBrowser and explores its functions. By clicking 



3.9 Enter GMapfactory and explore its functions. By clicking 



4. Conclusion

In this training module MapLab configuration was verified and various components and features of the RAD toolkit were explored. MapLab is automatically installed from the Training CD by invoking the demo installation. More details can be found at <http://www2.dmsolutions.ca/webtools/maplab/>.